

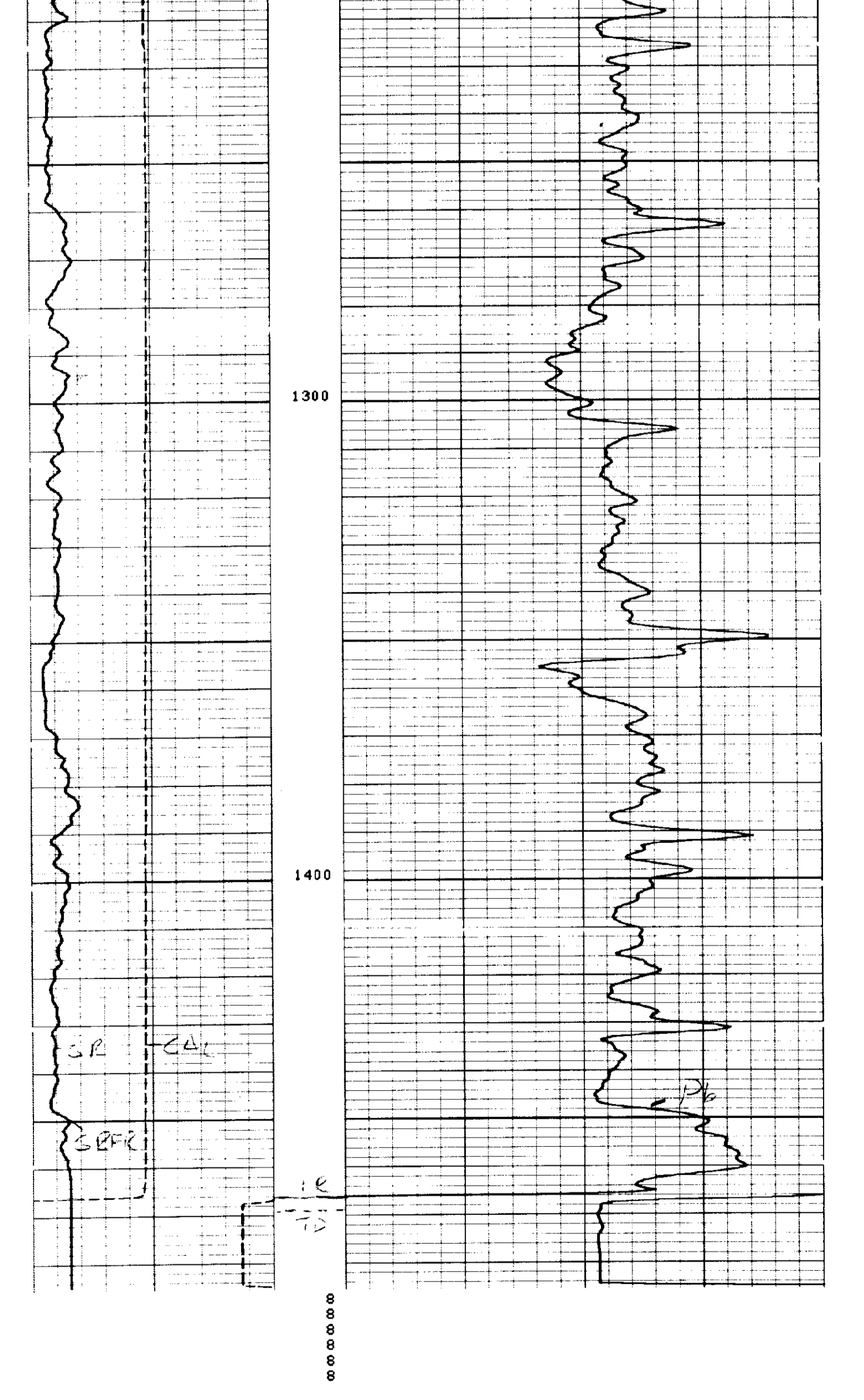
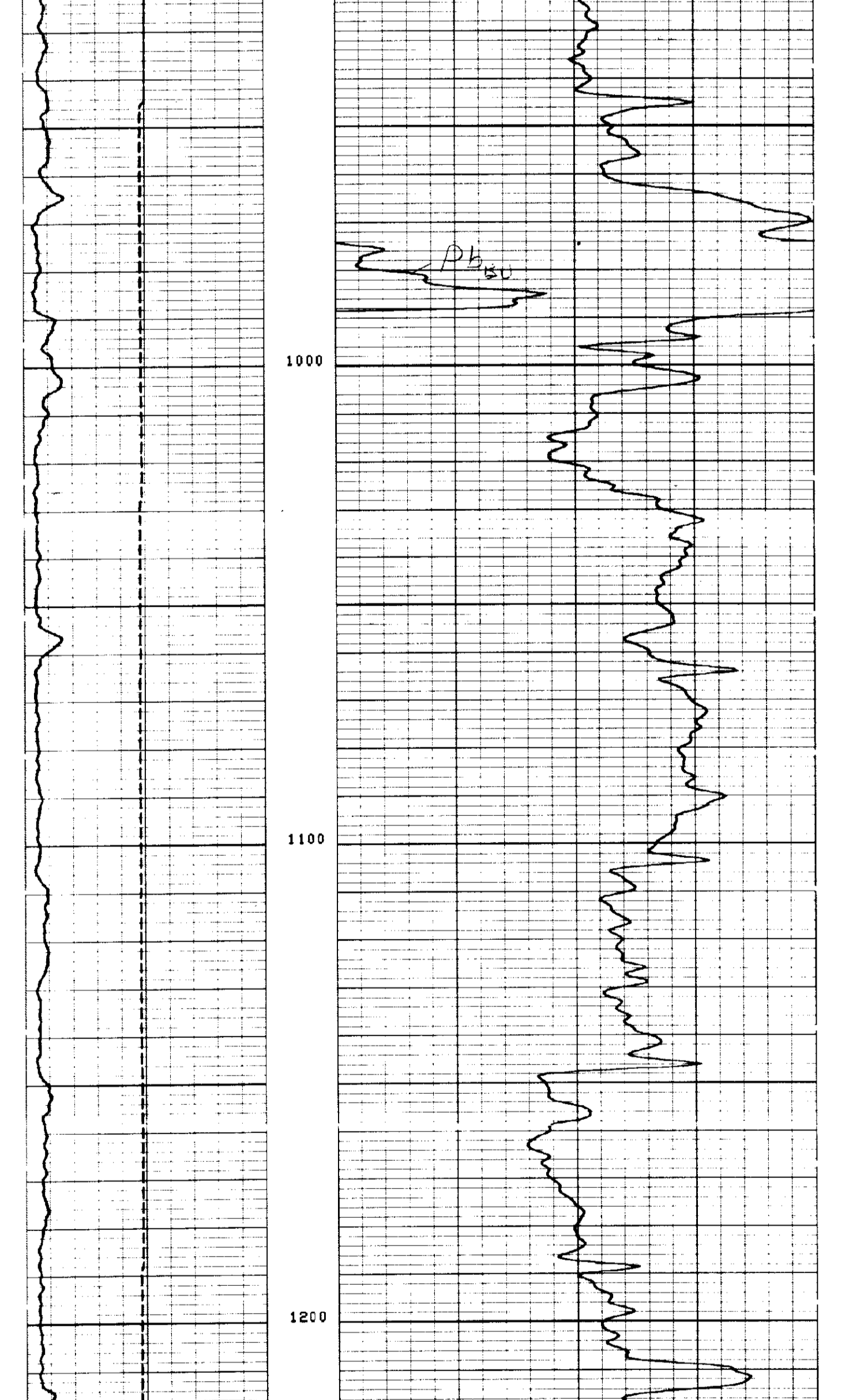
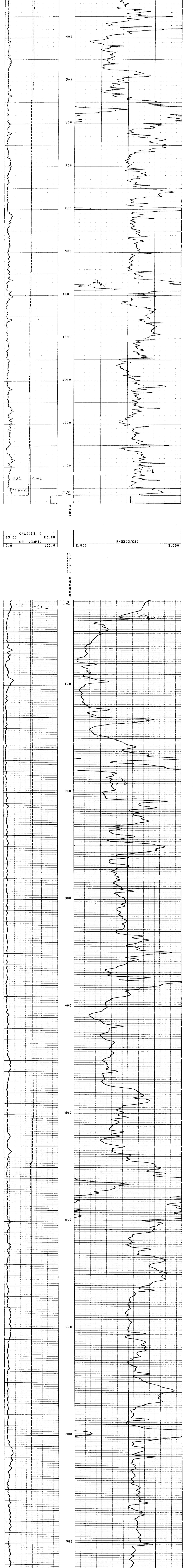
COMPANY: **EQ & G**
 WELL: **WEL 1**
 FIELD: **WILDCAT**
 COUNTY: **BLUTE** STATE: **LAH**
 LOCATION: **31174**
 COMPANY: **EQ & G**
 LOGGING UNIT: **31174**
 LOGGING DATE: **2008**
 LOGGING TIME: **11:30**
 LOGGING TYPE: **2008**
 LOGGING METHOD: **LOG**
 LOGGING INSTRUMENT: **LOG**
 LOGGING SOFTWARE: **LOG**
 LOGGING OPERATOR: **LOG**
 LOGGING SUPERVISOR: **LOG**
 LOGGING ENGINEER: **LOG**
 LOGGING TECHNICIAN: **LOG**
 LOGGING ASSISTANT: **LOG**
 LOGGING OPERATOR: **LOG**
 LOGGING SUPERVISOR: **LOG**
 LOGGING ENGINEER: **LOG**
 LOGGING TECHNICIAN: **LOG**
 LOGGING ASSISTANT: **LOG**

WELL NAME: **WEL 1**
 FIELD: **WILDCAT**
 COUNTY: **BLUTE** STATE: **LAH**
 LOCATION: **31174**
 COMPANY: **EQ & G**
 LOGGING UNIT: **31174**
 LOGGING DATE: **2008**
 LOGGING TIME: **11:30**
 LOGGING TYPE: **2008**
 LOGGING METHOD: **LOG**
 LOGGING INSTRUMENT: **LOG**
 LOGGING SOFTWARE: **LOG**
 LOGGING OPERATOR: **LOG**
 LOGGING SUPERVISOR: **LOG**
 LOGGING ENGINEER: **LOG**
 LOGGING TECHNICIAN: **LOG**
 LOGGING ASSISTANT: **LOG**

Run No.	1	2	3	4	5	6	7	8	9	10	11	12	13	14	15	16	17	18	19	20
API Serial No.	1001	1002	1003	1004	1005	1006	1007	1008	1009	1010	1011	1012	1013	1014	1015	1016	1017	1018	1019	1020
Fluid Level																				

EQUIPMENT DATA		CALIBRATION DATA	
GR	FFDC	BEFORE	AFTER
1001	1002	1003	1004
1005	1006	1007	1008
1009	1010	1011	1012
1013	1014	1015	1016
1017	1018	1019	1020
1021	1022	1023	1024
1025	1026	1027	1028
1029	1030	1031	1032
1033	1034	1035	1036
1037	1038	1039	1040
1041	1042	1043	1044
1045	1046	1047	1048
1049	1050	1051	1052
1053	1054	1055	1056
1057	1058	1059	1060
1061	1062	1063	1064
1065	1066	1067	1068
1069	1070	1071	1072
1073	1074	1075	1076
1077	1078	1079	1080
1081	1082	1083	1084
1085	1086	1087	1088
1089	1090	1091	1092
1093	1094	1095	1096
1097	1098	1099	1100
1101	1102	1103	1104
1105	1106	1107	1108
1109	1110	1111	1112
1113	1114	1115	1116
1117	1118	1119	1120
1121	1122	1123	1124
1125	1126	1127	1128
1129	1130	1131	1132
1133	1134	1135	1136
1137	1138	1139	1140
1141	1142	1143	1144
1145	1146	1147	1148
1149	1150	1151	1152
1153	1154	1155	1156
1157	1158	1159	1160
1161	1162	1163	1164
1165	1166	1167	1168
1169	1170	1171	1172
1173	1174	1175	1176
1177	1178	1179	1180
1181	1182	1183	1184
1185	1186	1187	1188
1189	1190	1191	1192
1193	1194	1195	1196
1197	1198	1199	1200

REMARKS



REPEAT SECTION

AFTER SURVEY TOOL CHECK SUMMARY			
PERFORMED:	79/03/10	(VERSION	12.4A 78/12/8)
PROGRAM FILE:	NUC		
PGTK TOOL CHECK			
	BEFORE	AFTER	UNITS
FFDC	936	334	CPS
NFDC	527	529	CPS
BEFORE SURVEY CALIBRATION SUMMARY			
PERFORMED:	79/03/10	(VERSION	12.4A 78/12/8)
PROGRAM FILE:	NUC		
SGTE DETECTOR CALIBRATION SUMMARY			
	MEASURED	JIG	CALIBRATED
GR	90	217	164
	SMALL	LARGE	UNITS
	50	117	GAPI
PGTK DETECTOR CALIBRATION SUMMARY			
	BEFORE	AFTER	UNITS
FFDC	936	334	CPS
NFDC	527	529	CPS
PGTK CALIPER CALIBRATION SUMMARY			
	MEASURED	JIG	CALIBRATED
CALI	10.3	15.3	12.0
	SMALL	LARGE	UNITS
	10.3	15.3	IN